

COOK BOOK

GTXpro



Dealer v02

ENG
UK

brother
at your side

> A reference guide for all GTX pro users

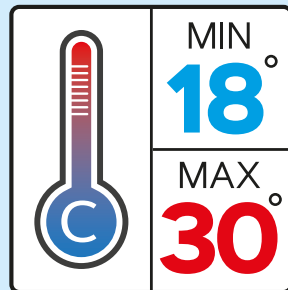


ENVIRONMENTAL CONDITIONS

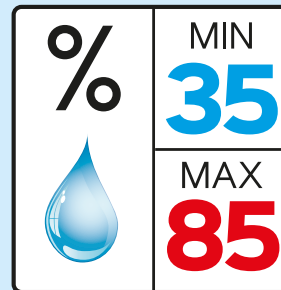
Mandatory Temperature & Humidity Requirements

Required to keep your warranty! Temperature & Humidity are recorded in the Log file!

TEMPERATURE



HUMIDITY



Go to the menu: **Maintenance** > **Temperature/Humidity info** >



> If temperature is too cold, printer will switch automatically to Low-Temp Mode and reduce the SPEED!
> If humidity too low, please install a HUMIDIFIER!



PRE-TREATMENT RATIO & QUANTITY

1 Liter

**PRE
Treatment
Solution**

1,25 Kg



2 Liters

**Distilled
Water**

2 Kg



3 Liters

**PRE-Treatment
Ready
to use**

3,25 Kg



> This mixing ratio might vary due to the type of garment which is used. Use your experience!



T-Shirt Color



Spray Quantity

**PRE-Treatment
Ready
to use**

DARK



30 Grams

MEDIUM



24-27 Gr.

LIGHT



14-17 Gr.



> Don't forget that you have to define a surface of **14 X 16 inches** [35 X 40 cm] with your Pre-Treatment machine to weight the amount of spray, with a scale, after applying the Pre-Treatment liquid on a T-shirt!

> For example, on a Schulze PTM, you should enter a **length of 36 cm** and the **full width of 4 nozzles** will be 40 cm! And then, **calibrate** the PT machine to spray 30 g on the garment!

HEAT PRESS SETTINGS FOR PRE-TREATMENT DRYING



**PRE
Treatment**

1/2
Distilled Water

35
Seconds

180°C
360°F

5-5,5
Bars
75-80
PSI



Use Silicon Sheet on the heat press to cover the Pre-treatment and **clean** the surface every 5 T-shirts min.!

HEAT PRESS & TUNNEL DRYER SETTINGS FOR INK CURING



HEAT PRESS
**Ink
Curing**

35
Seconds

180°C
360°F

0,7-1,4
Bars
10-20
PSI

TUNNEL DRYER
**Ink
Curing**

3,30
Minutes

160°C
320°F



Check the **REAL** Temperature with a Probe or with Strips to be sure that you are safe for the washability!

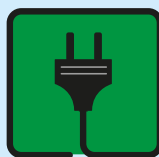
VERY IMPORTANT RULE



The Brother GTX pro should **ALWAYS** be left with Power **ON**



NEVER shut **OFF** the printer except if requested by the display message only!
Power is requested to perform the needed recirculation of the inks every day.

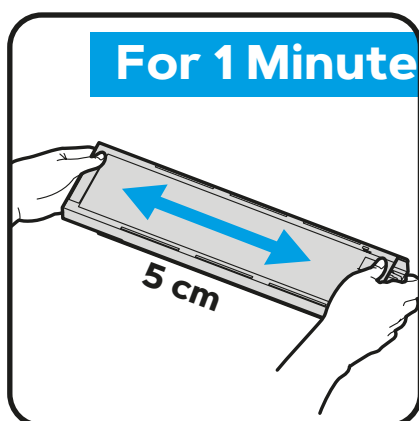


NEVER POWER OFF THE PRINTER!

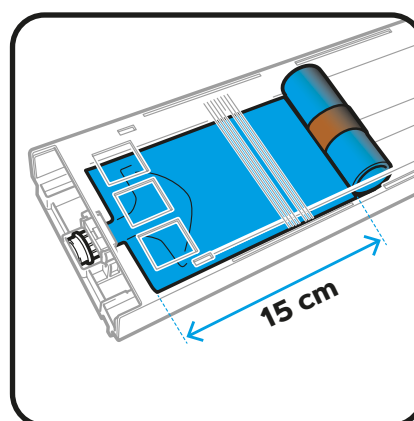


DAILY AGITATION OF WHITE INK


Perform the procedure shown below if the message **"Remove the white ink cartridge and shake it"** is displayed before starting printing operation.



Take out the white ink cartridge from the printer.
Shake the cartridge horizontally 100 times side by side to stir the white ink.



At a ink level of approximately **15 cm**, shake the cartridge with cover open and with the ink pouch slightly unwinded, to make the ink easier to stir.

! > Repeat the same process on the other white ink cartridge! On the operation panel, press  and the White Ink refilling will be performed automatically by the printer!



POUCH REPLACEMENT - VERY IMPORTANT PROCESS!

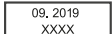
Open the cartridge's **lid** on a **flat surface** and remove the empty pouch.
Unpack carefully a new ink pouch from its shipping carton.

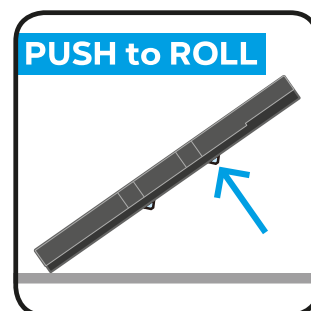
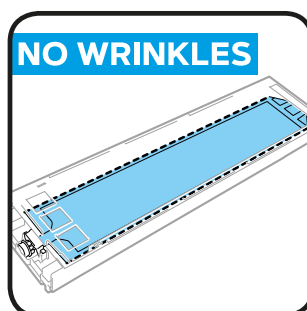
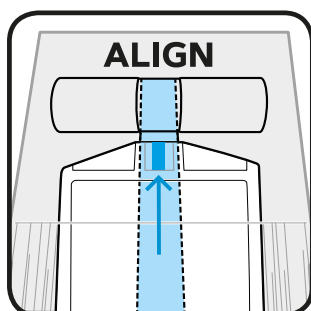
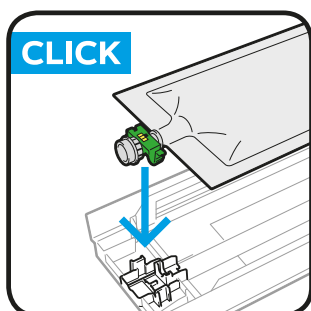
Push the **green tip end** of the ink pouch into the cartridge until it **clicks** into place. Straighten the ink pouch to align it with the gutter of the lid of cartridge, and mount in position inside the metal spring by pulling it with your hand.
If the edge of the ink pouch is bent or undulating significantly, make it **straight and flat** with your hand **to avoid wrinkles**.

Place the pouch in a straight alignment with the cartridge. Align lines with each other!



Close the lid, verify if the spring is rolling to the front. Place the cartridge at around **45°** and **push** on the **2 upper metallic latches** to add a bit more tension on the ink pouch. Double-check that you have not generated some **wrinkles** again !

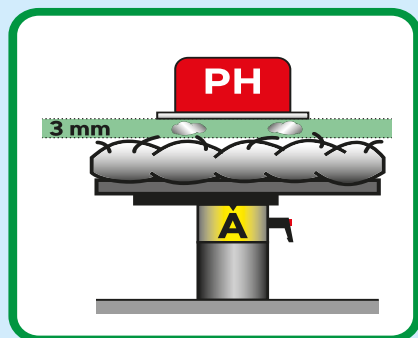
Clean the outside of the **green tip end** that goes in contact with needle inside printer.
Attach a shelf life **sticker**  included with ink pouch onto the front of the cartridge.



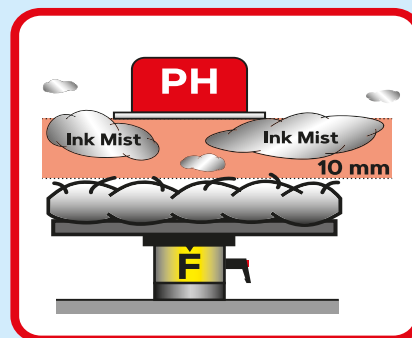
! > If you are not trying to avoid wrinkles like explained above, you could get the errors **2084 & 2085** displaying: **"Winding-up Failure"**



GOOD GAP



EXCESSIVE GAP

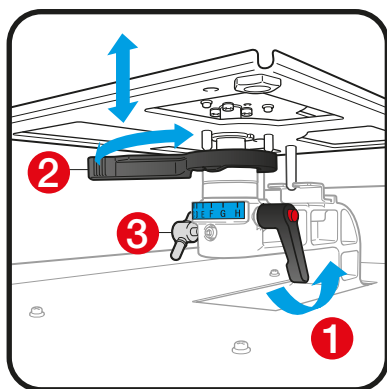


> ALWAYS KEEP THE **CLOSEST DISTANCE** BETWEEN THE PRINTHEADS AND THE SURFACE OF THE GARMENT!
IT IS VERY IMPORTANT FOR THE LONG LIFE OF YOUR PRINTER!

ADJUSTING THE HEIGHT OF THE PLATEN



To provide an optimum printing image quality when a thicker textile is used, you need to **adjust** the platen's height related to the **thickness of the textile**.



To adjust the platen height, loosen the **Platen Fixing Lever ①** and move the **Platen Height Adjustment Lever ②** to a lower position.

Re-tighten the Platen Fixing Lever if you are happy with new distance. Flatten down all the wrinkles of the fabric. To check if new textile is not detected by the **sensor**, push the button **①** and **repeat** the process **if needed**! If you need to go down further more, remove 1 or 2 collars, loosen the knob **③** and push down the platen bearing by 1 or 2 steps.

Reattach everything and tighten again the **Platen Fixing Lever**



> Don't forget to **bring back** the platen to the **A position** after printing on thicker material!

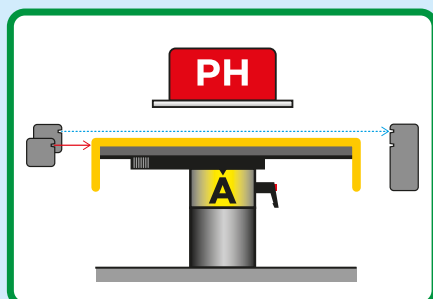
> Always leave the knob **③** **tighten** after changing position!

> If you have to print above hem and seams, go for **UNI-directional printing** to keep quality!

NEW "PLATEN TOO LOW" SENSORS

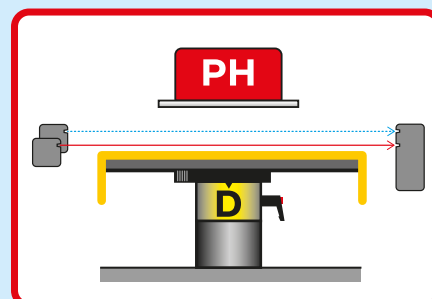


NORMAL DETECTING SITUATION



Top Left: **Obstacle** Sensor
Bottom Left: **EDP** Sensor

EXCESSIVE DROPPING SITUATION



Error Code: **2072**



NOZZLE TEST

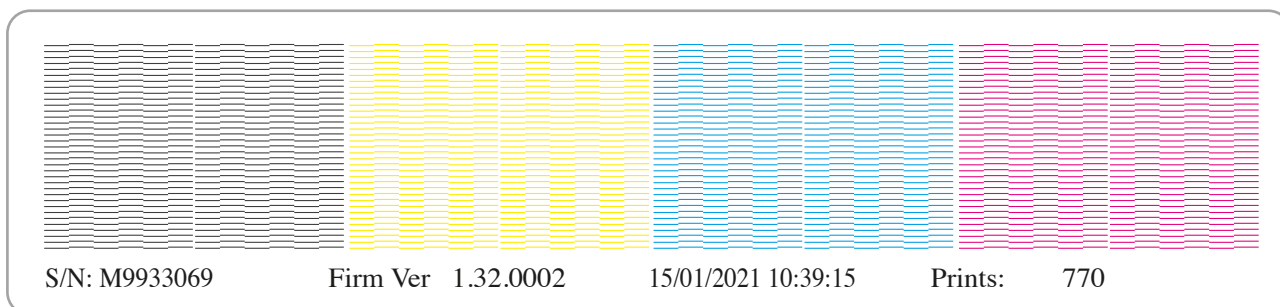
! TO BE DONE **EVERY** WORKING DAY

You have to print a nozzle test for White & CMYK **every morning** before using the printer. It is the only way to know the status of the nozzles in the machine!

> HOW TO DO A NOZZLE TEST ?

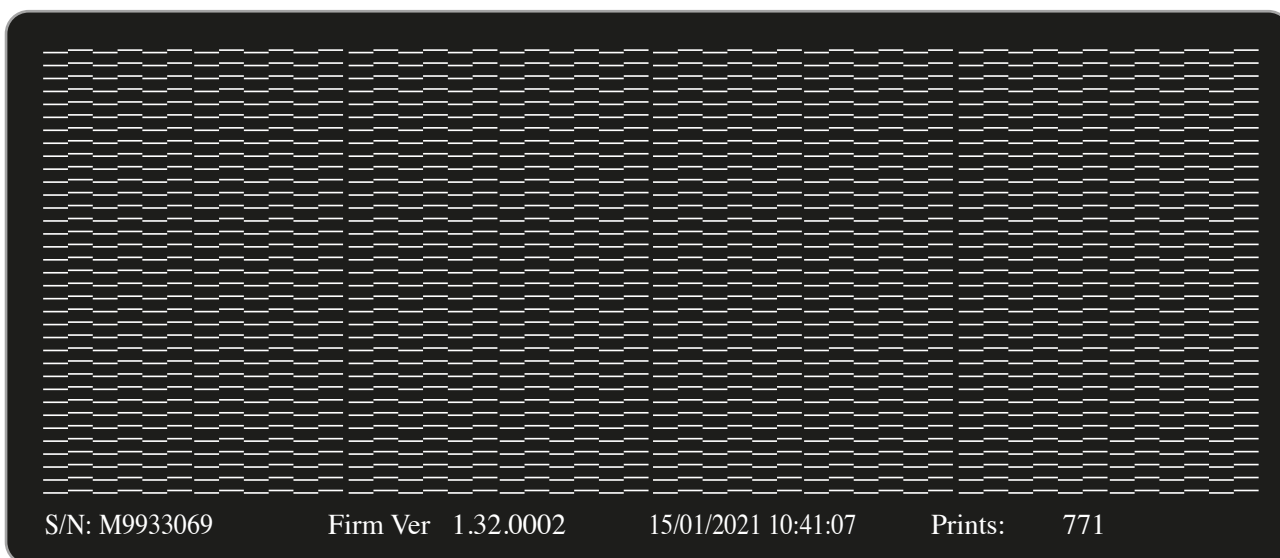
Always place the Platen at **level A**

Menu > **Test Print** > **Nozzle Check CMYK** >  to check colors on a white paper sheet



Repeat the same procedure to perform a nozzle test of the **White** printhead

Menu > **Test Print** > **Nozzle Check White** >  to check White on a black paper sheet or inkjet plastic sheet



> If not all nozzles are firing, start a **Head Cleaning** to open the closed nozzles!

> HOW TO DO A PRINTHEAD CLEANING?

If only a few nozzles are missing, select **Head Cleaning** > **Powerful Cleaning** and select PH + **OK**

If more than 10 nozzles, select **Head Cleaning** > **Super Cleaning** and select PH + **OK**



> Perform a new Nozzle Test to check the result and **redo** if ALL nozzles are NOT firing!



To achieve a good **weekly maintenance** you will have to do the following actions:



WEEKLY MAINTENANCE

+ Suction Cap Cleaning

+ Exhaust Cleaning

+ Wiper Cleaning

+ Nozzle Guards Cleaning

> Always use this menu to perform cleanings or replace parts:

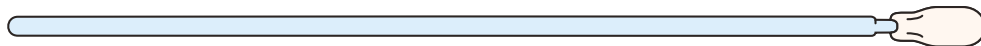
Menu > **Maintenance** > **Maintenance Part Clean/Replace** > and follow instructions on the display



Suction Cap & Exhaust Cleaning

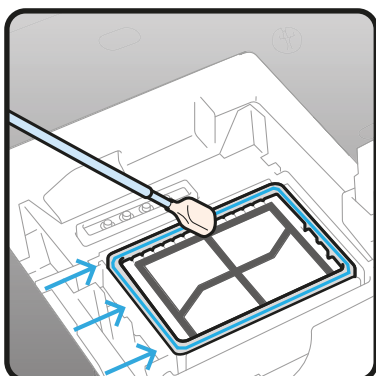
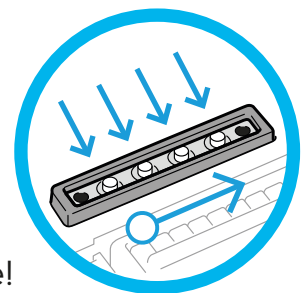
! TO BE DONE **EVERY WEEK**

The black silicon lips of the two cappings should be cleaned with the **NEW Cleaning Stick** dipped in **Cleaning Solution**.

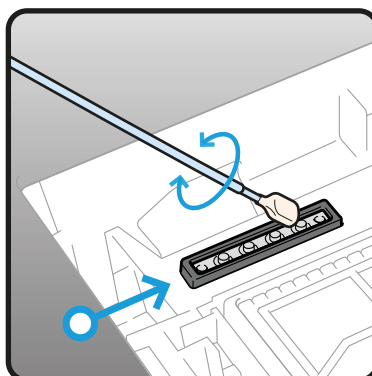


It is necessary to remove the build-up of the remaining ink staying on the edges of the cappings. It will prevent air leakage and keep the good suction of the pumps! Be careful not to touch the foam! Keep it flat!

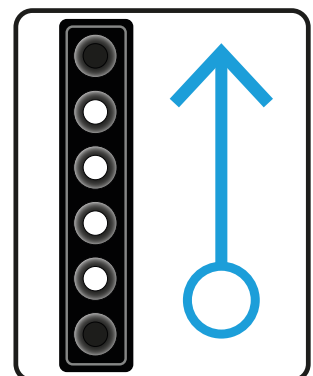
The **four extrusion lances** [see in the blue circle] and the **2 holes** sitting on the side of the capping at the **Exhaust** position need also to be cleaned and free of dried ink. Always **clean first the hole** at the front and go backward while cleaning the lances and finish carefully by the last hole!



Suction Cap Cleaning



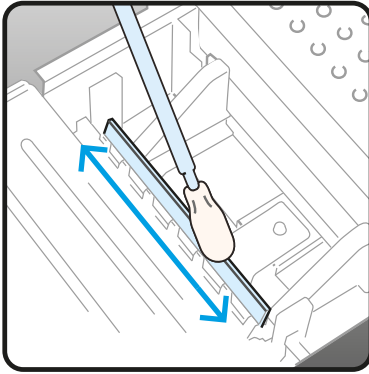
Exhaust Cleaning



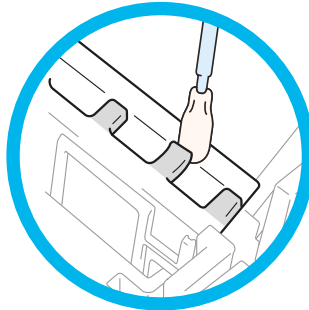
Direction to clean

Wiper Cleaning

! TO BE DONE **EVERY WEEK**



Both white plastic wipers [White & CMYK] should be cleaned on **both sides** and **tops** with the **Cleaning Stick T** dipped in **Cleaning Solution**.



Use the tip of the **Cleaning Stick T** to clean **under** the teeth of the wiper holder and **remove the dried ink**.

Be sure to use the **Cleaning Stick T** separately for **white** ink and **color** ink!

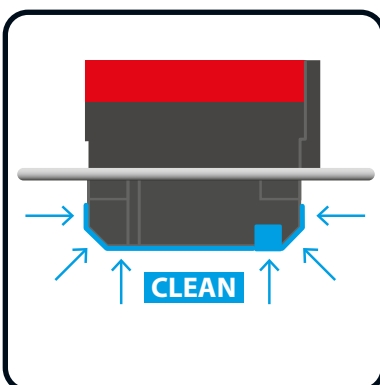
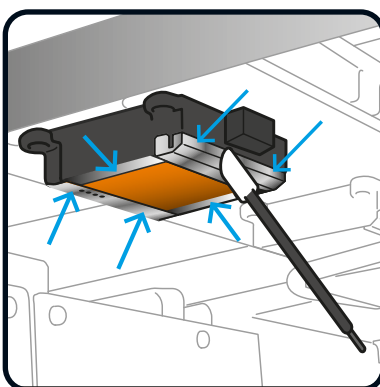
Nozzle Guards Cleaning

! TO BE DONE **EVERY WEEK**

Wipe clean the 2 nozzle guards ① & ② with the **Clean Stick R** dipped in **Cleaning Solution**. Same way to clean the metallic parts ④ & ⑤ of the printhead.

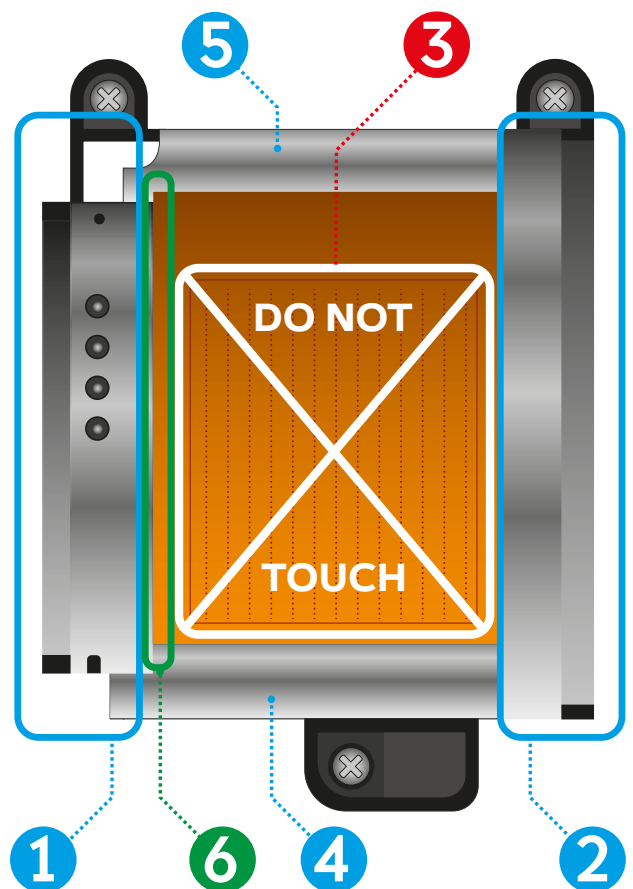
A **very important** place to clean is area ⑥ between nozzle guard and nozzle plate. Be sure **NOT** to touch the **nozzle surface ③** at all!

💡 > Manually move the carriage to such a position that you can perform the cleaning **with ease**.



Clean Stick

R



> **Do not** empty remaining **Cleaning Solution** from the Cleaning Cup in the Maintenance station but in the **Waste Tank** below the printer!

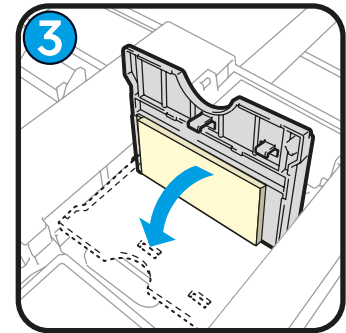
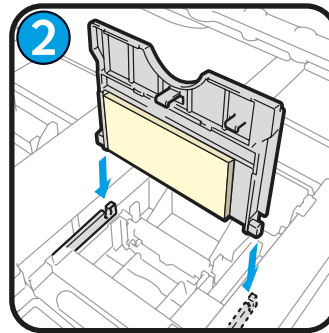
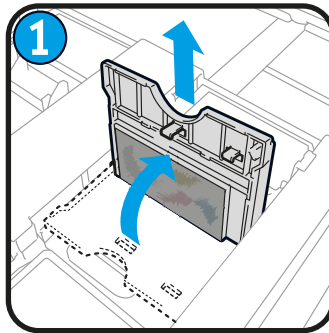


MAINTENANCE PARTS CLEANING & REPLACING PROCEDURES

WARNING **ERROR**

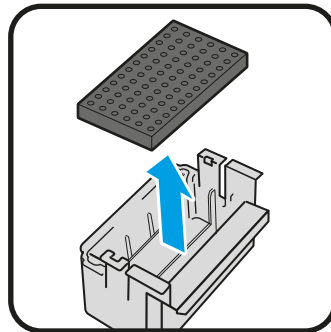
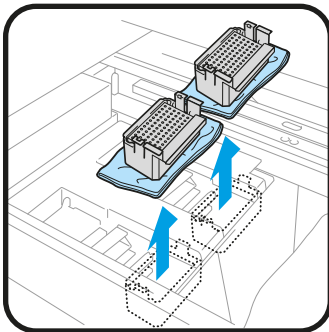
In case of Warning/Error messages please follow the below procedures

WIPER CLEANER REPLACEMENT



Simply remove the **old Wiper Cleaner** by lifting it up. Replace with a **new** one.

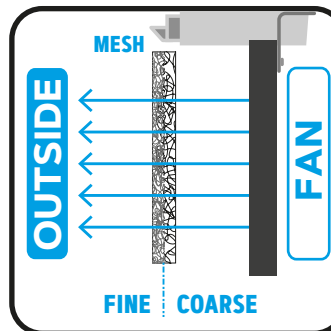
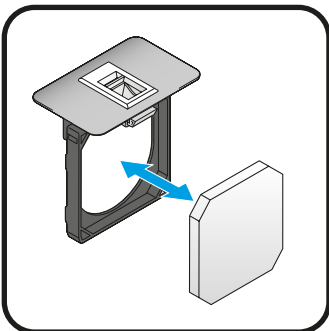
FLUSHING FOAM REPLACEMENT



Lift up the Flushing Receivers and place them on cleaning paper to avoid dripping ink. Remove Flushing Foams and **clean** the **holes** of the 2 grey receivers. Install new Foams and put back the receivers at their original location. **Clean** also under the receivers place!

> After removing and replacing of the Flushing Foams, do **NOT** forget to **clean** the **side holes** of the receivers! It is very critical **to avoid clogging** of the ink path to the waste tank!

FAN FILTER REPLACEMENT



Extract the 2 filter holders from the back of the machine. Mount a **new Fan Filter** in each black frames. **Coarse** mesh surface in direction of the **inner side** of the printer and **fine** mesh surface in direction of the **outside** of the printer.

> Always use this menu to perform cleanings or to replace parts

Menu > **Maintenance** > **Maintenance Part Clean/Replace** > and follow instructions on the display





ADDITIONAL WEEKLY MAINTENANCE

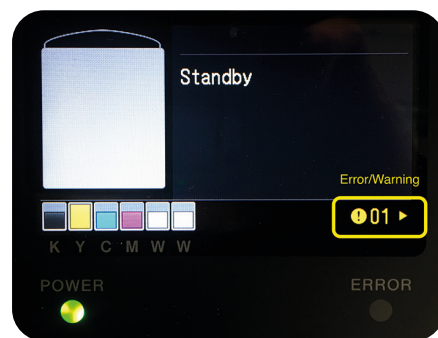


Visual inspection is important to keep your printer up and running. Verify all the moving parts of the machine and also check for leakage of ink.

Please follow also all the instructions that could appear on the **display** of the printer!



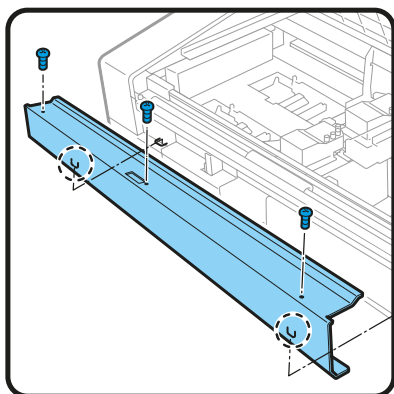
When you see a **yellow** number push the **key** to know what you have to do to erase the **Error/Warning** message.



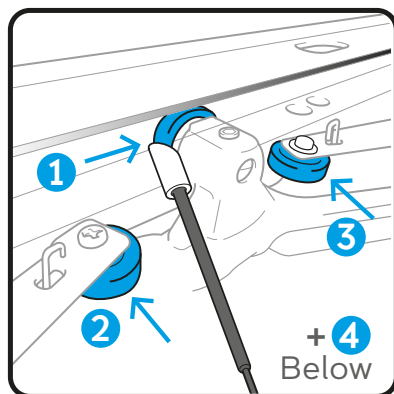
INTERNAL CLEANING OF PRINTER



If the inside of your printer is covered with **INK MIST**, perform a thorough **CLEANING**



- Remove **3 Screws** to remove the **Encoder Cover**.



- With the **Clean Stick R** dipped in **Cleaning Solution**, wipe away the stains on the **4 Carriage Rollers**

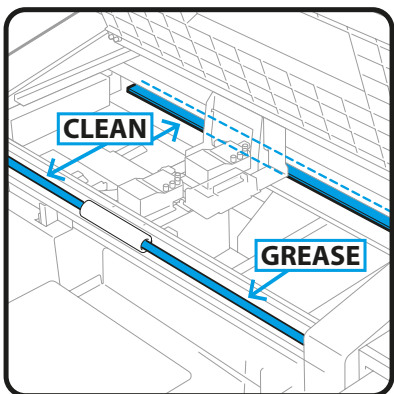
[There is 1 more Roller hidden just below the Roller 1]

- Move the carriage from side to side to wipe all around the 4 rollers completely.

- Clean the **Carriage Guide Shaft** and the **3 sides** *[upper, front, and lower]* of **Roller Guide** with a non-fuzzy cloth moisten with a small amount of **Isopropyl Alcohol [95°]**

- Do not** use alcohol on other parts than the carriage guide shaft and the roller guide!

- Apply a proper amount of **Molykote 30 Grease** onto the **Carriage Guide Shaft** only *[never on the Roller Guide!]*



- Remove 3 screws to take out the encoder metal cover. With your non-fuzzy cloth moisten with **Alcohol**, clean carefully both side of the **Encoder Strip**

- Perform a **CR Speed Adjustment**.

Menu > Printer Setting > CR Speed Adjustment > OK

- Print out a **Nozzle Check** pattern and do a **Nozzle Cleaning** if necessary.



> Always use this menu to perform cleanings or replace parts:

Menu > Maintenance > Maintenance Part Clean/Replace > and follow instructions on the display

WHEN NOT USING PRINTER FOR A LONG PERIOD OF TIME



! > When the printer will not be used for a prolonged period of time, take appropriate procedures before storing the printer depending on storage period or conditions.

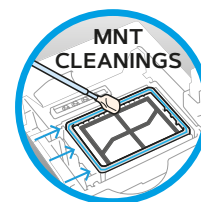
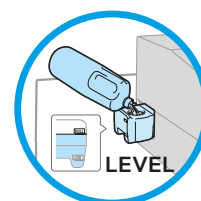
! > **DO NOT** turn the printer **OFF**, otherwise, the printer may be **DAMAGED**!

EVERY 2 WEEKS OF INACTIVITY



The printer can be used through normal procedure after the storage period, by performing the following maintenance tasks before:

- Please empty the **Waste ink Tank**.
- Check the amount of **Cleaning Solution** in the cleaning liquid **tank**, and refill the tank if its amount is below the proper level.
- **Stir the white ink** if a white ink cartridge stirring message is displayed on the operation panel screen.
- Clean thoroughly the **Nozzle Guard, Wiper, Suction Cap** and **Exhaust Cap**.
- Print out a **Nozzle Check** pattern for White and CMYK.
- If a non-firing nozzle is found: Perform **Head Cleanings**, run the **Nozzle Check** prints and verify the result again. Continue same process until the blocked nozzles are **ALL OPEN** again!



! > REPEAT THE SAME **WHOLE** PROCEDURE **EVERY 2 WEEKS**!

INK & SOLUTIONS STORAGE



CMYK & White inks, Cleaning Solution, Maintenance Solution & Pretreatment Solution should be stored at a temperature range **between** minimum **0°** and **40°** maximum!

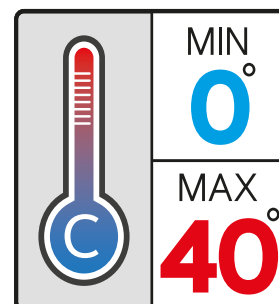


> Be carefull **NOT** to go **below Zero** degree!



> Please **ROTATE** the **W** pouches boxes **every week**!

STORAGE



HOW TO EXTRACT A LOG FILE FROM THE PRINTER?



Insert a USB stick in the **front slot** of the printer to be able to copy the log file

Go to the menu: **Maintenance** > **Log copy to USB** >



INK & CONSUMABLES

GTXpro

	Product Description	Product Code	Prize/Unit	INKS & CONSUMABLES
INK POUCHES	C Cyan Ink Pouch 350cc [GCX-4C35-1]	BGCX40C03500112		
	M Magenta Ink Pouch 350cc [GCX-4M35-1]	BGCX40M03500112		
	Y Yellow Ink Pouch 350cc [GCX-4Y35-1]	BGCX40Y03500112		
	K Black Ink Pouch 350cc [GCX-4K35-1]	BGCX40K03500112		
	C Cyan Ink Pouch 700cc [GCX-4C70-1]	BGCX40C07000112		
	M Magenta Ink Pouch 700cc [GCX-4M70-1]	BGCX40M07000112		
	Y Yellow Ink Pouch 700cc [GCX-4Y70-1]	BGCX40Y07000112		
	K Black Ink Pouch 700cc [GCX-4K70-1]	BGCX40K07000112		
LIQUIDS	W White Ink Pouch 2 x 700cc [GCX-4W70]	BGCX40W07000022		
	CS Cleaning Solution 1,9Kg [GCX-4E02]	BGCX40E002K0052		
	CS Cleaning Solution 5Kg [GCX-4E05]	BGCX40E005K0042		
	MS Maintenance Solution Pouch 700cc [GCX-4S70]	BGCX40S07000012		
	PT PreTreatment Liquid 5Kg-4L [GCX-4P05]	BGCX40P005K0042		
OTHER PARTS	PT PreTreatment Liquid 20Kg-4L [GCX-4P20]	BGCX40P020K0032		
	Wiper Cleaner [2 pieces in the box]	SB6673001		
	Flushing Foam [2 pieces in the box]	SC0935001		
	Fan Filter [2 pieces in the box]	SB7007001		
	Cleaning Sticks  [50 pieces in the bag]	SB7008001		
	Cleaning Sticks  [100 pieces in the bag]	N400001601		
	Cleaning Sticks SET [6x  type + 6x  type]	SB5858201		
	Curious Skin black A4 paper [for Nozzle Tests]	N400001660		



GTX SERIES MAINTENANCE TUTORIAL VIDEOS

All the maintenance procedures described in this Cookbook **MUST** be performed on a daily, weekly, or prompted basis in order to keep your printer performing **properly**.

> Please read carefully the **Instruction Manual** for each specific maintenance procedure for step by step instructions!



Please also check **very useful videos** at:

<https://www.youtube.com/user/BrotherGTSeries/videos>



DEALER CONTACT

Company Name:

Email address:

Representative:

Phone number: